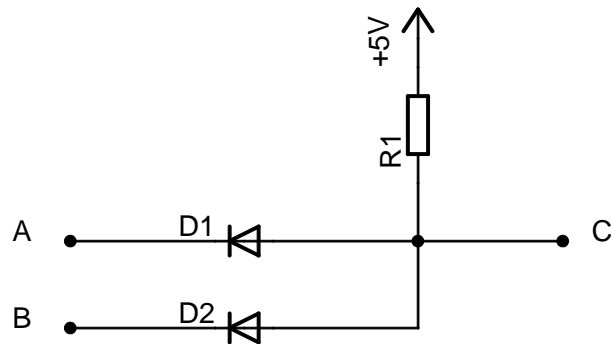
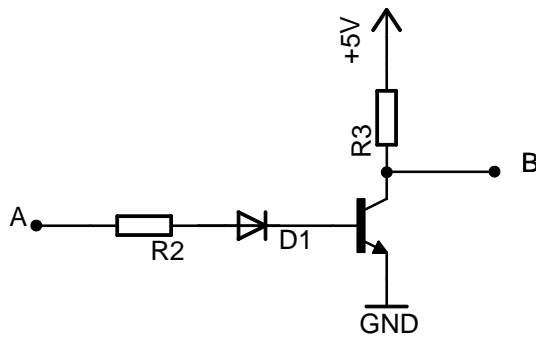


Schaltpläne zum Ausschneiden

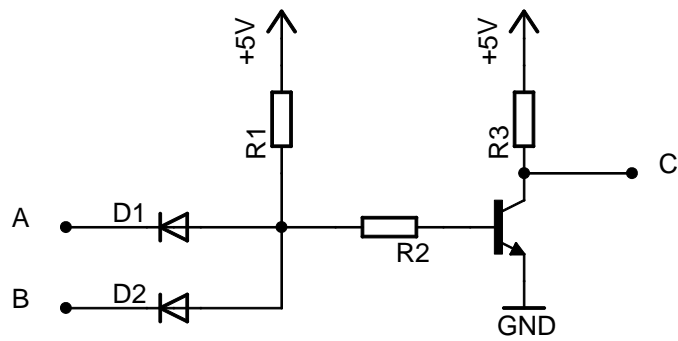
1.1 AND-Gatter



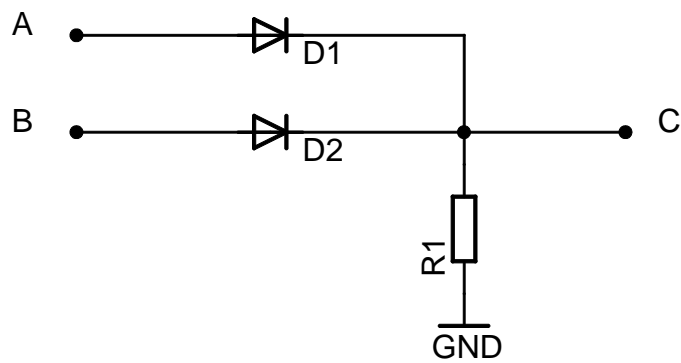
1.2 NOT-Gatter



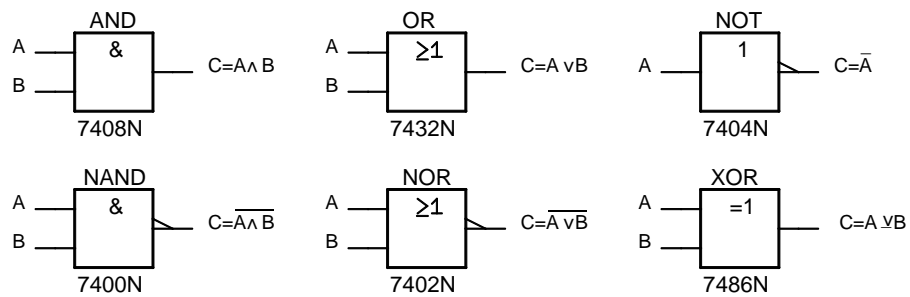
1.2 NAND-Gatter



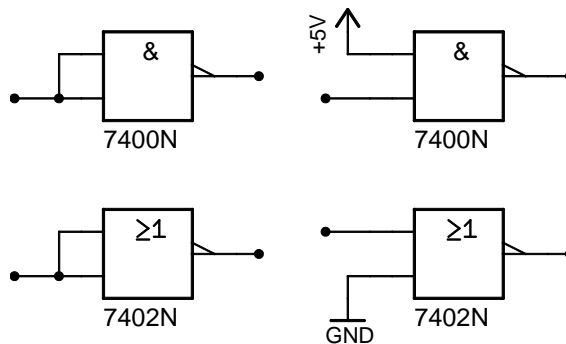
1.3 OR-Gatter



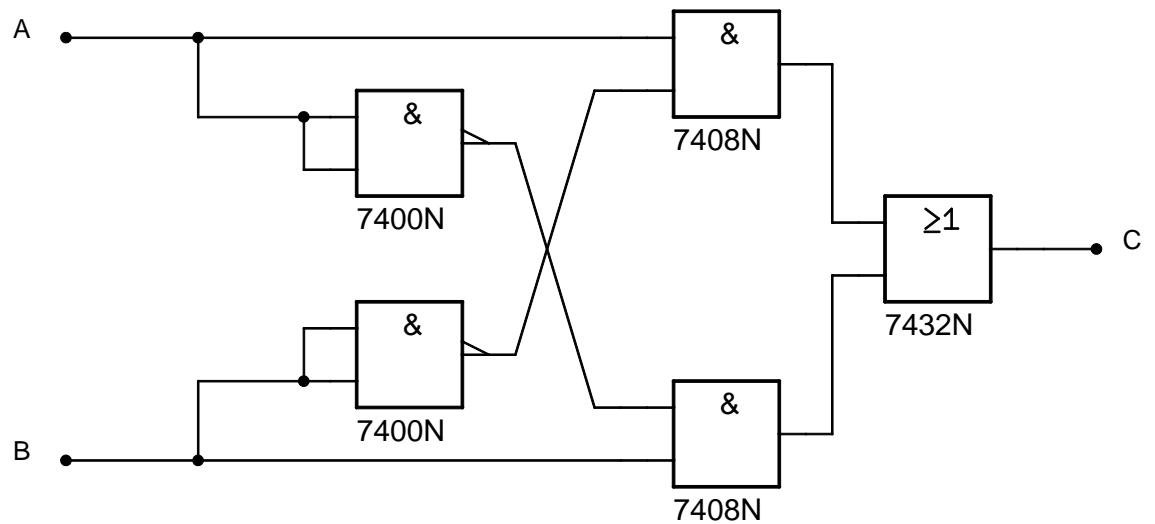
2 Weitere einfache logische Funktionen (Gatter), realisiert mit ICs



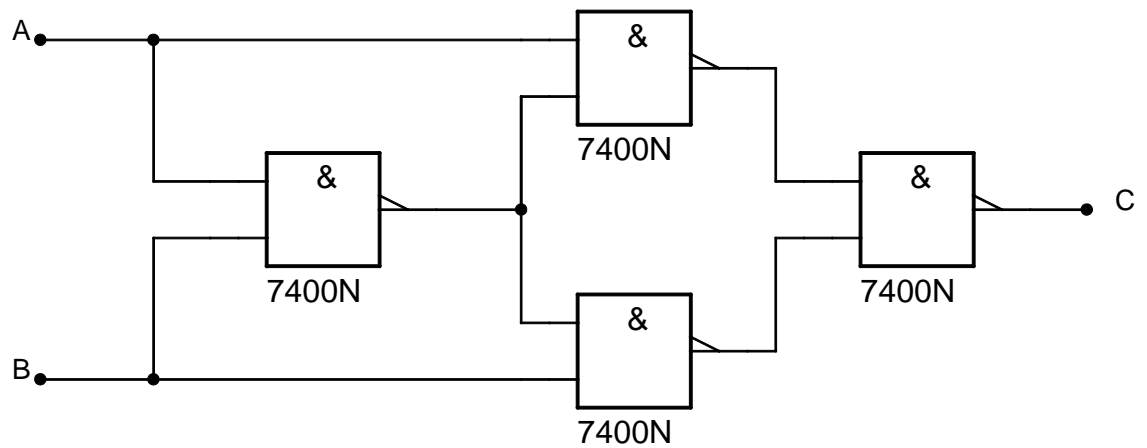
2.1 Inverter aus NAND- oder NOR-Gatter



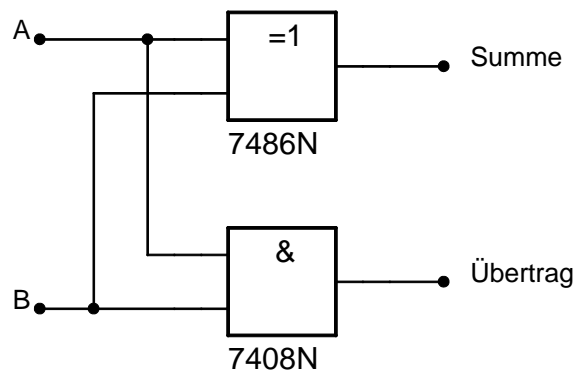
2.2 EXOR-Gatter



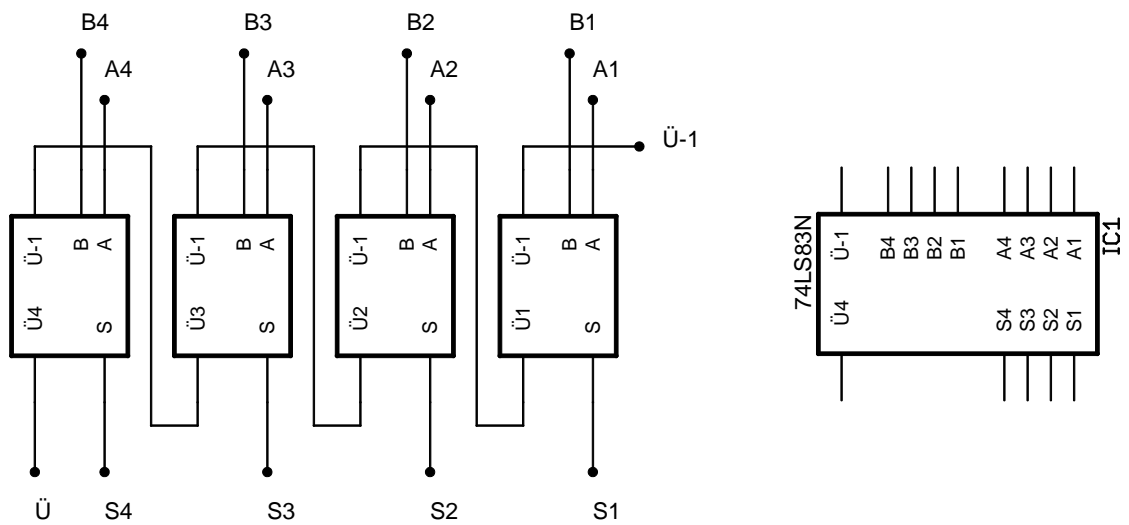
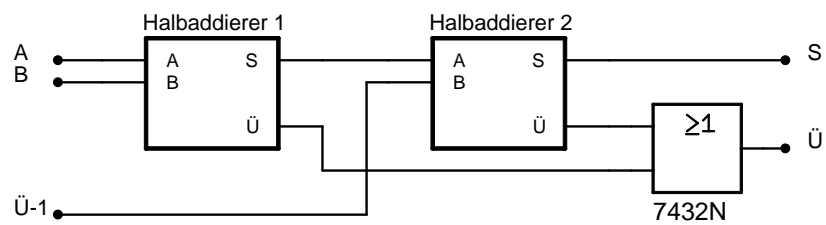
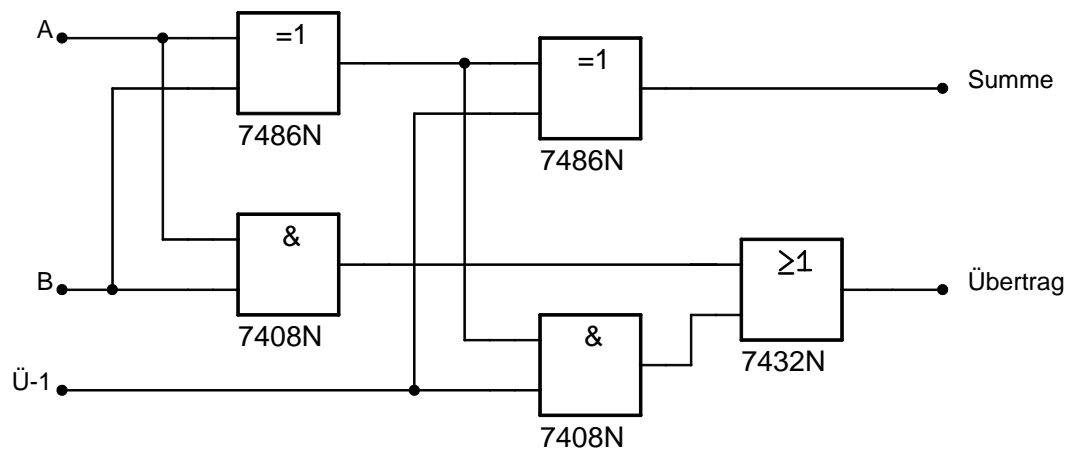
2.3 EXOR-Gatter aus NAND-Gatter



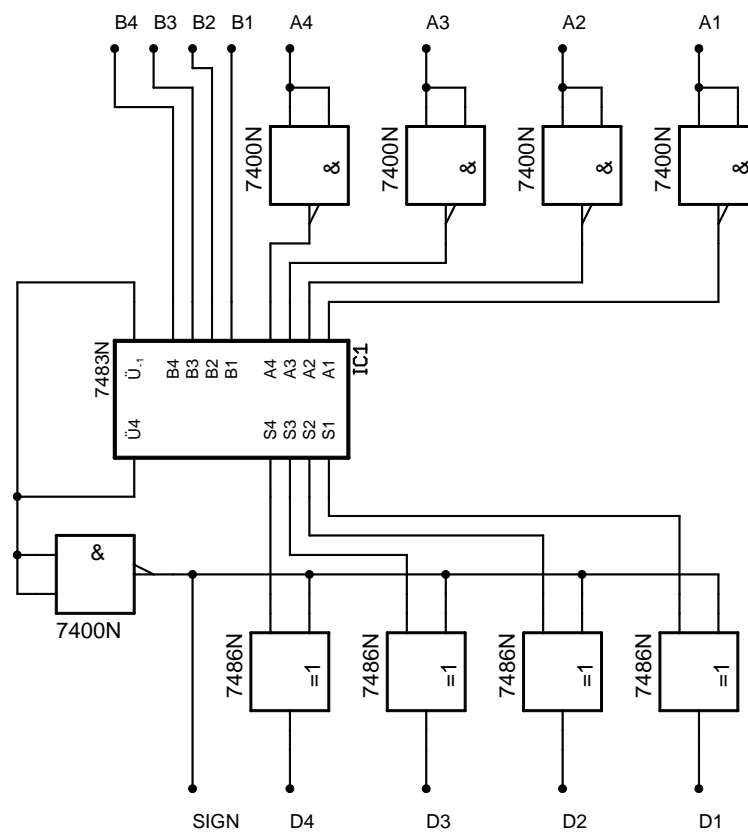
3.1 Halbaddierer



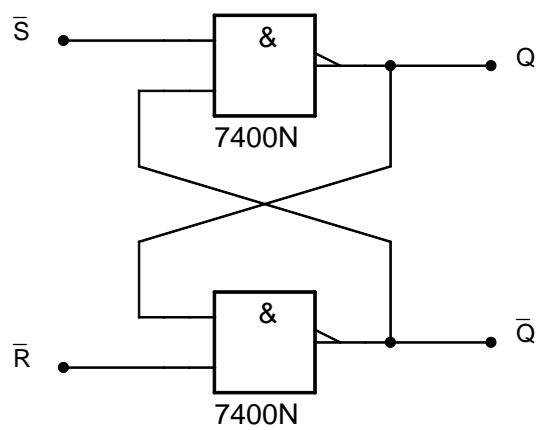
3.2 Volladdierer



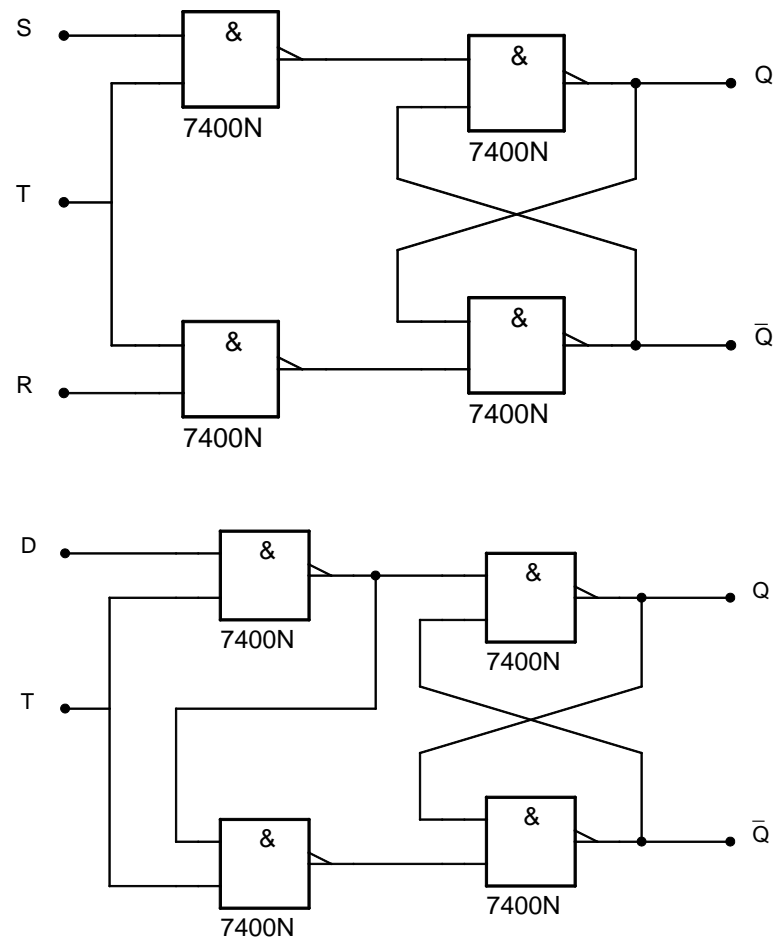
3.3 Subtrahierer



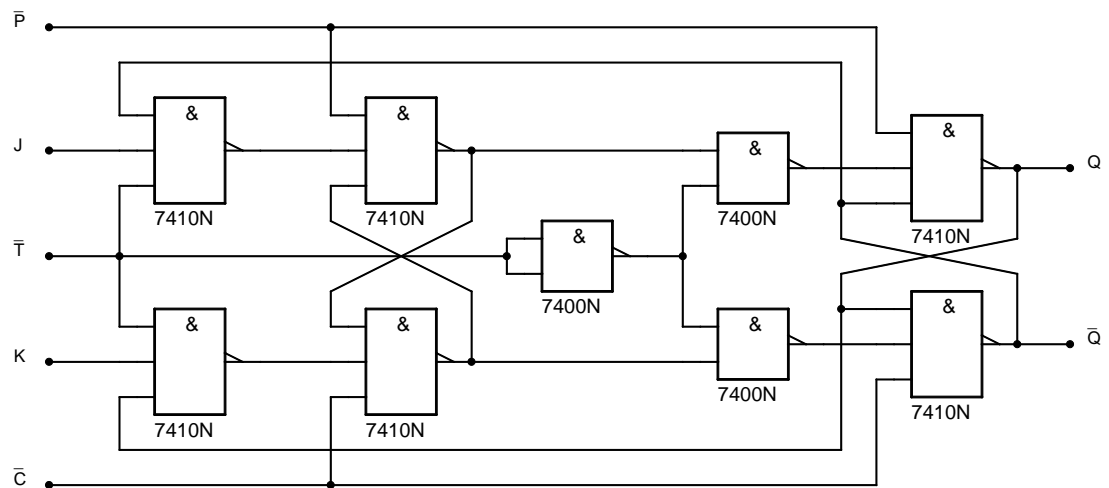
4.1 RS-Flip-Flop



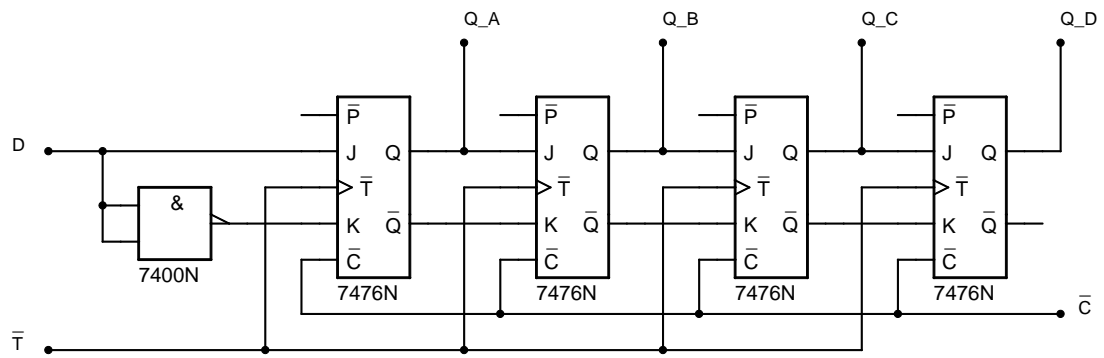
4.2 Getaktetes RS-Flip-Flop



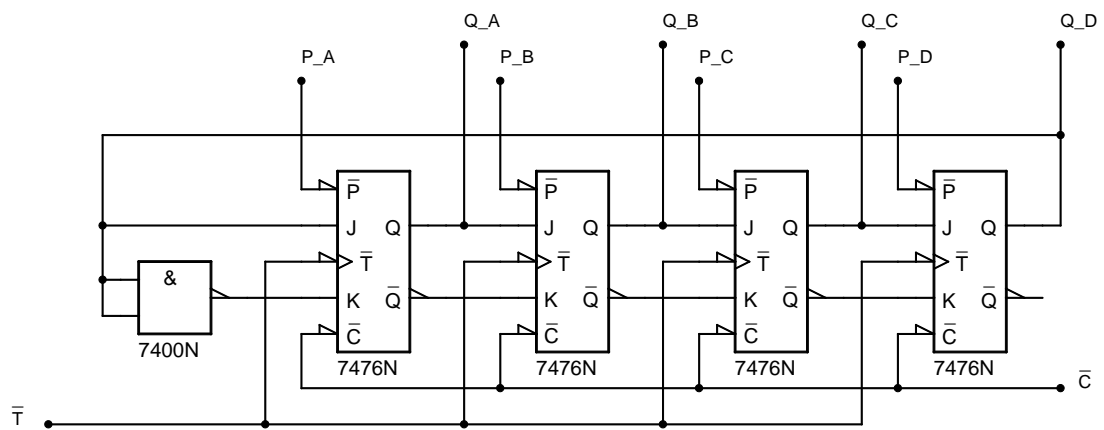
4.3 JK-MS-Flip-Flop



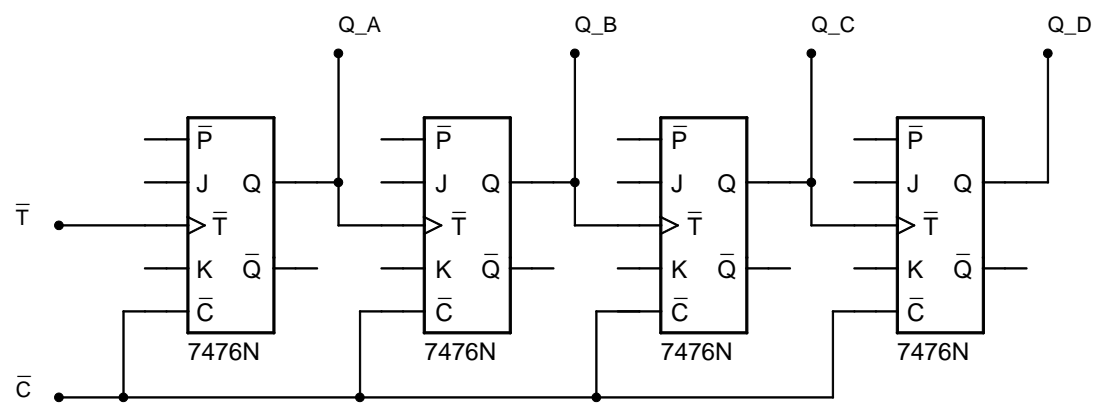
5.1 Schieberegister

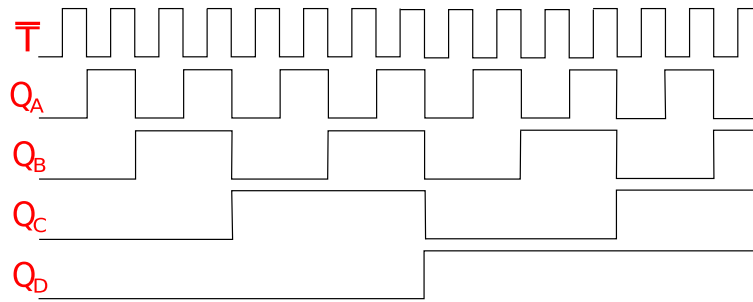


5.2 Rotationsregister

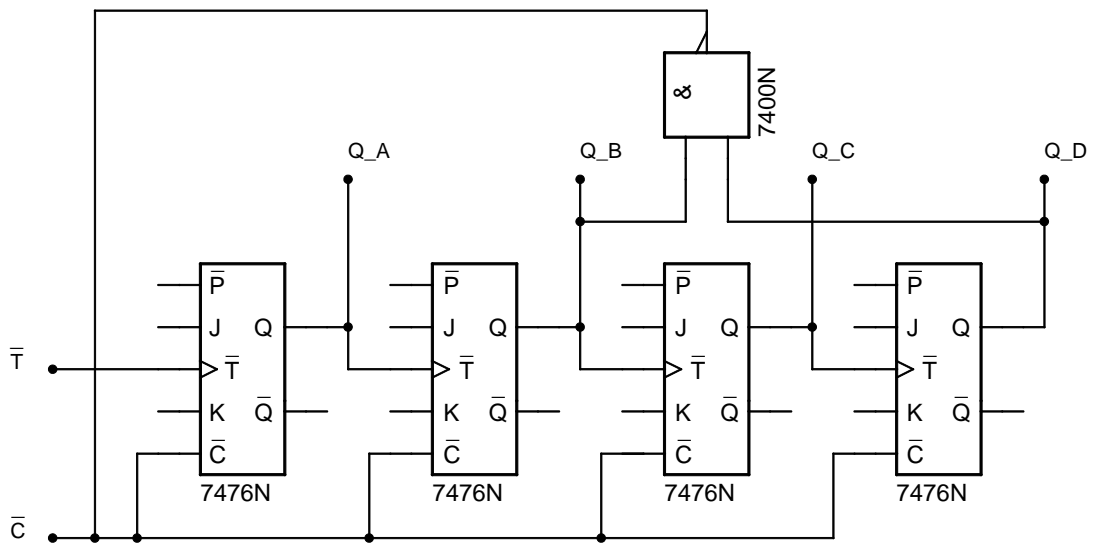


6.1 Asynchrone Zähler

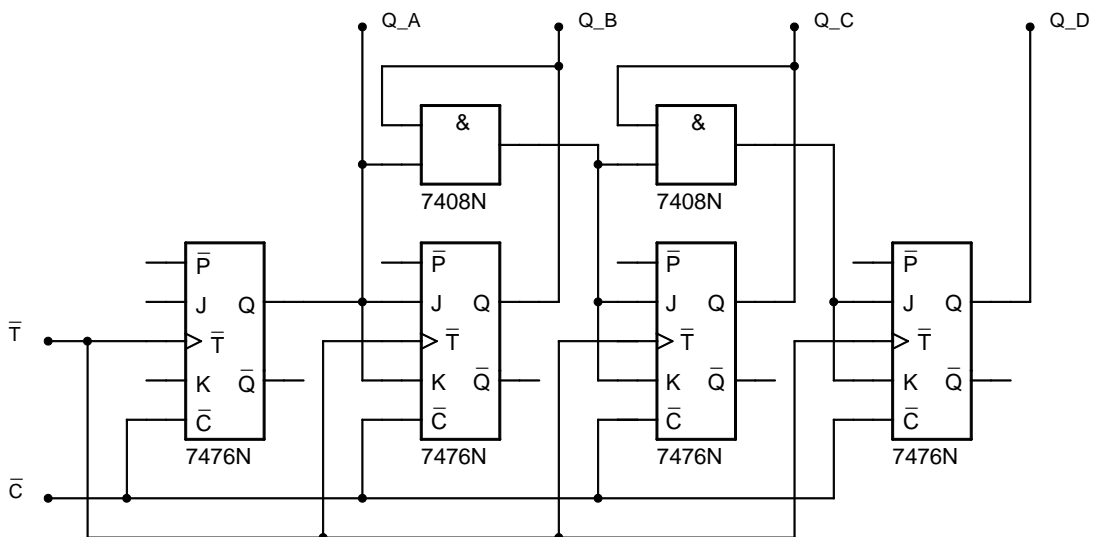




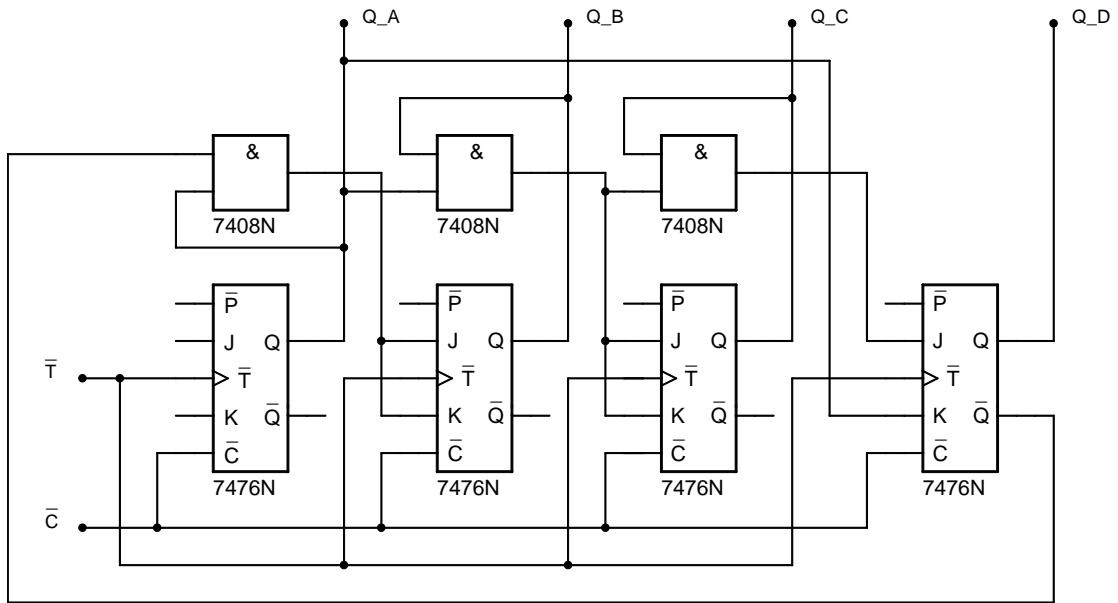
6.2 Asynchroner Dezimalzähler



6.3 Synchronzähler



6.4 Synchroner Dezimalzähler



7 Digital-nach-Analog-Wandlung

